



44 CE APTA is the Gewiss range of junction boxes designed to adapt to different installation needs: to fit the environment, suit the application, and align with common installation habits. The range is available in three sizes (2K, 3K, and 4) and three colours (black, grey, and white) to meet different application and aesthetic requirements. 44 CE APTA offers six fixing methods for maximum installation flexibility, including external screw fixing with bracket included, internal screw fixing, knock-in fixing with threaded base, panel mounting, fixing with cable ties for trays or temporary structures, and the patented nail gun fixing system. A dedicated range of accessories further enhances installation speed, safety, and reliability, including terminal supports compatible with Wago 221-412, 221-413, and 221-415, as well as the patent-pending Earthing Clamp for metal cable glands used with armoured cables.

GENERAL INFORMATION

| | | | |
|--------------------------------|---|---------------------------|--|
| Accordance with Standards | IEC 60670-1, IEC 60670-22 | Lid screws (no. and type) | 4 x 1/4 turn, captive, sealable |
| Application | Ordinary junctions | Captive lid | Yes |
| Internal dimensions BxDxH (mm) | 81x81x46 | Operating temperature | -25 +60 °C |
| External dimensions BxDxH (mm) | 88x88x51 | IP degree | IP66 (membrane) / IP67 (cable gland) |
| Material | PP + GF (case), TPE (membrane), PA + GF (bracket) | Glow wire test | 750 °C (case), 650 °C (membrane) |
| Colour | Grey RAL 7035 | Thermo-pressure with ball | 85 °C |
| Lid | Low screwed | UV resistance | Yes (IEC 60670-22) |
| Type of bottom | Standard | Halogen Free | Halogen-free in compliance with EN IEC 63355 |
| Walls | With threaded entries and membrane | Cable entries on sides | 8 x M20x1,5 threaded entries with Ø 3÷12 mm membrane |
| - | - | Cable entries on back | 2 x Ø 3÷12 mm membrane entries |
| - | - | - | - |

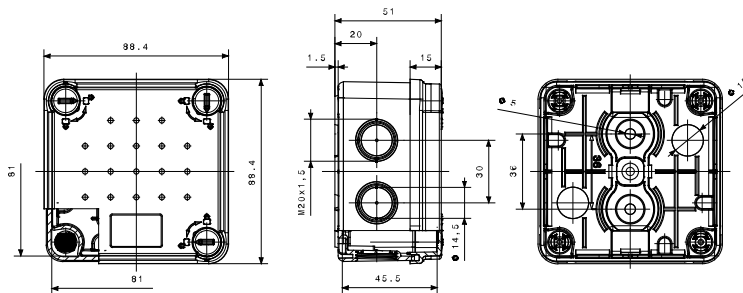
ELECTRICAL CHARACTERISTICS

| | | | |
|-----------------------------------|---------------------------------------|----------------------|--|
| Insulation class | II (according to IEC 61140 standards) | Accessories supplied | Fixing bracket |
| AC Rated operational voltage (Ue) | 750 V | Completeable with | GW44622 (double insulation caps), GW44741 (Wago 221 terminal holder), GW44742 (earthing clamp) |
| Insulation voltage (Ui) | 750 V | | |

BEHAVIOUR WITH CHEMICAL AND ATMOSPHERIC AGENTS

| Part | Saline solution | Acids | | Bases | | Solvents | | | | Mineral oil | UV rays |
|----------|-----------------|--------------------|-----------|--------------|-----------|--------------------|---------------|---------------|-----------|--------------------|-----------|
| | | Concentrated | Diluted | Concentrated | Diluted | Hexane | Benzol | Propanol | Alcohol | | |
| Case | Resistant | Limited resistance | Resistant | Resistant | Resistant | Limited resistance | Not resistant | Resistant | Resistant | Resistant | Resistant |
| Membrane | Resistant | Limited resistance | Resistant | Resistant | Resistant | Not resistant | Not resistant | Not resistant | Resistant | Limited resistance | Resistant |

DIMENSIONAL



TECHNICAL SYMBOLOGY



IP

GWT



-25 +60 °C

IP66 (membrane) / IP67 (cable gland)

750 °C (case), 650 °C (membrane)

85 °C

Yes (IEC 60670-22)

Halogen-free in compliance with EN IEC 63355

II (according to IEC 61140 standards)

STANDARDS/APPROVALS



GEWISS S.p.A. Via A. Volta, 1
24069 Cenate Sotto - Bergamo - Italy
tel. +39 035 94 61 11 fax +39 035 94 69 09
Company subject to the management and coordination of Polifin S.p.A.

www.gewiss.com
sat@gewiss.com
Last update 20/05/2026

Data, measures, designs and pictures are shown only as informative purposes, and could be changed without previous notice